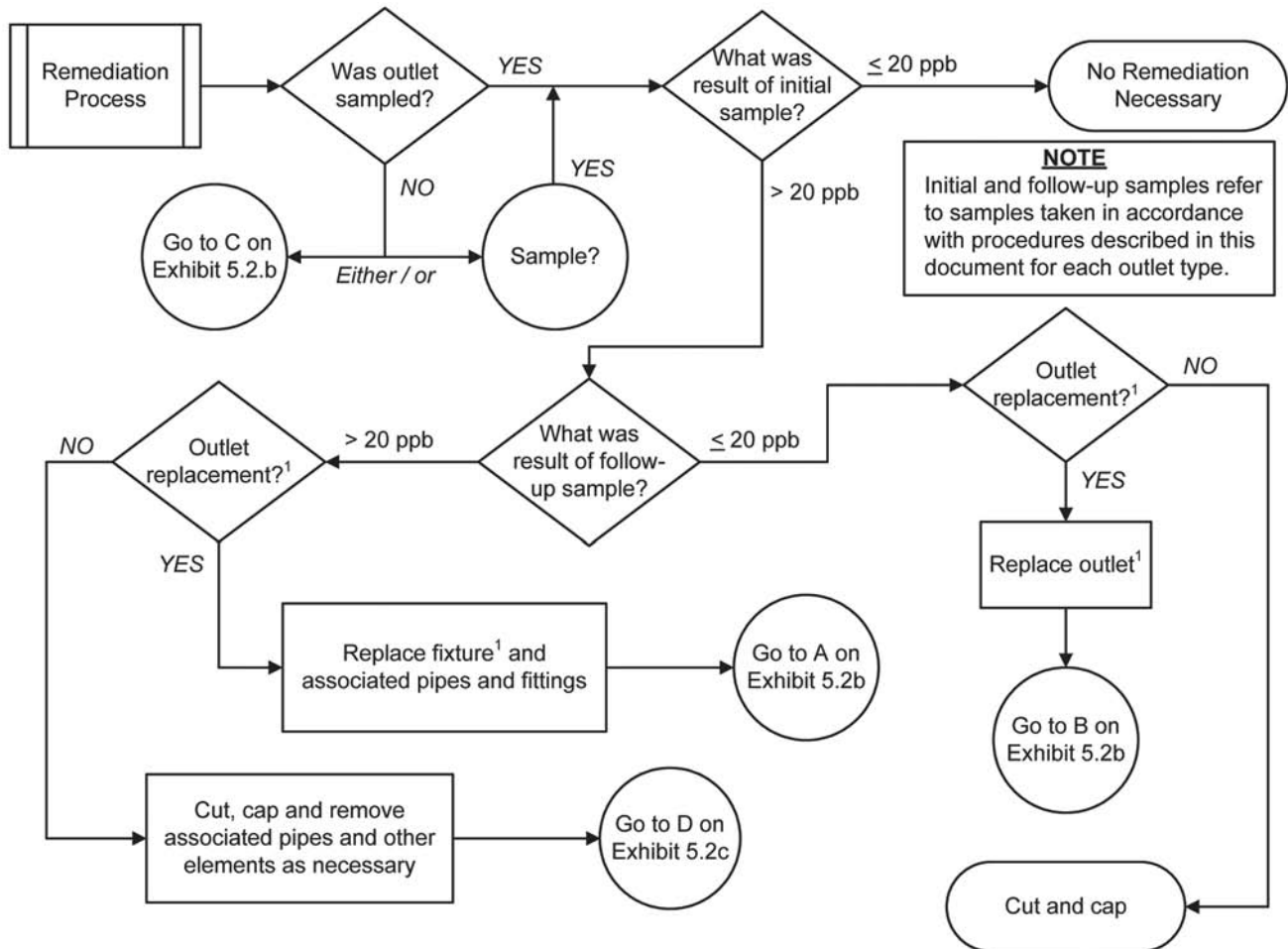
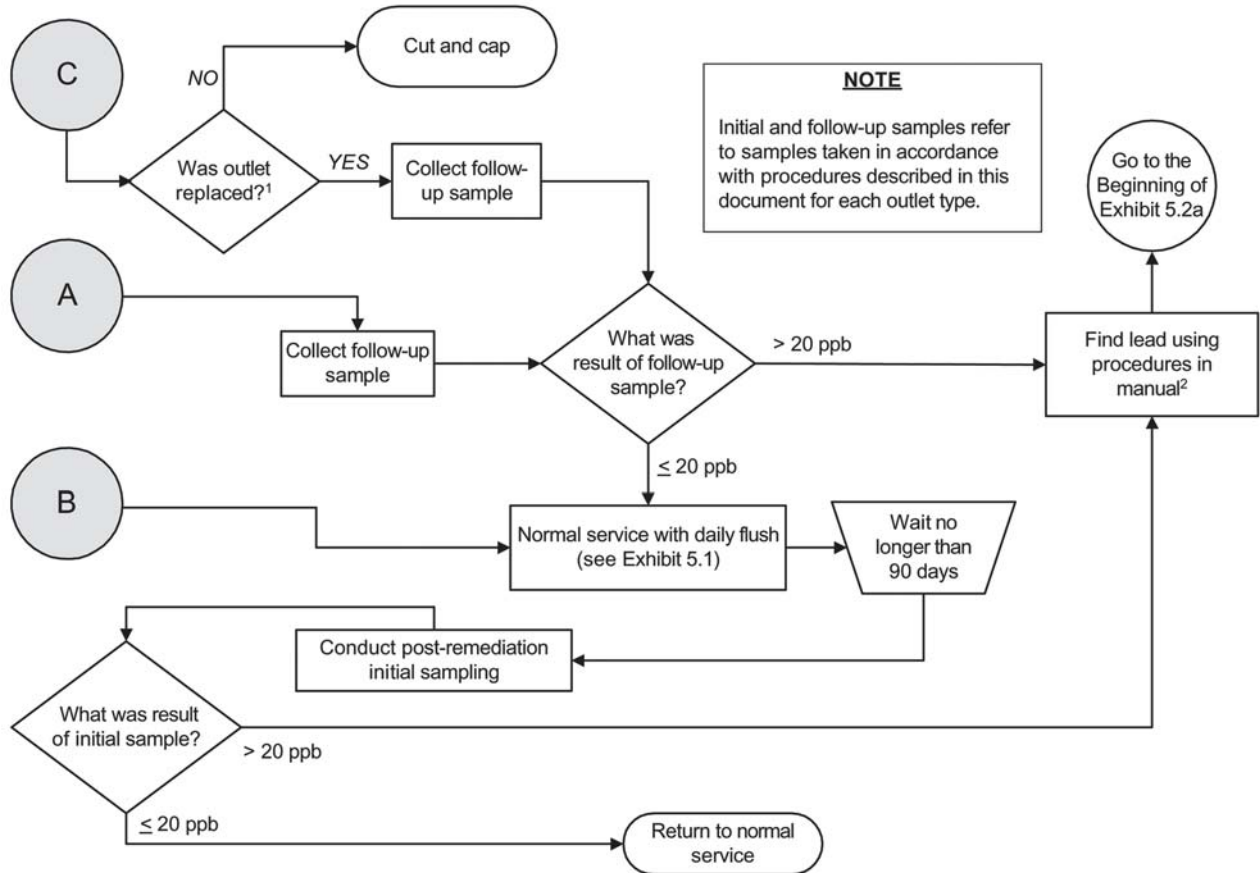


### Exhibit 5.2a: Remediation Flow Chart (part 1)



1 Point-of-use treatment devices or routine flushing measures may serve as alternatives to outlet replacement (see Section 5.3). Continue on with the flow chart.

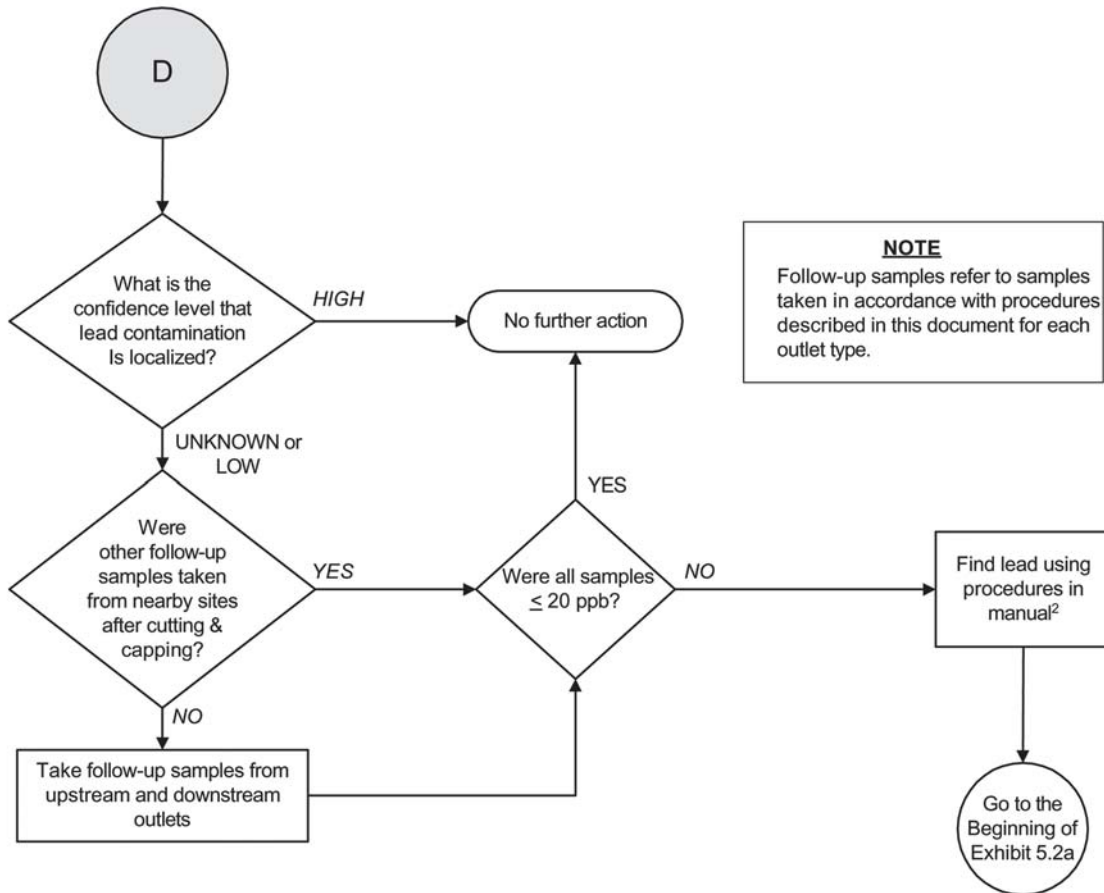
### Exhibit 5.2b: Remediation Flow Chart (part 2)



1 Point-of-use treatment devices or routine flushing measures may serve as alternatives to outlet replacement (see Section 5.3). Continue on with the flow chart.

2 Procedures include follow-up sampling and development of a plumbing profile (see Sections 3.1 and 4.4).

### Exhibit 5.2c: Remediation Flow Chart (part 3)



<sup>2</sup> Procedures include follow-up sampling and development of a plumbing profile (see Sections 3.1 and 4.4).